

Winter Park Tower



FOR LEASE | OFFICE



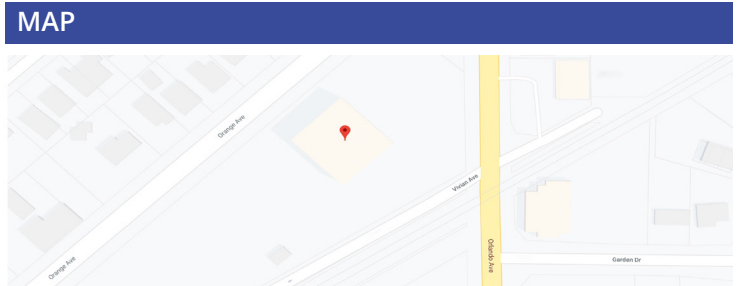
1560 N ORANGE AVE. WINTER PARK, FL 32789

PROPERTY FEATURES:

- Located in the heart of beautiful Winter Park, minutes from Park Avenue
- Easy access to Downtown Orlando and I-4
- On-site parking and two Electric Car charging stations
- Numerous dining and retail amenities in immediate area
- Small suites may be combined
- Full Service Lease
- 2,544 SF - 12,035 SF available

2020 DEMOGRAPHICS	1 MILE	3 MILES	5 MILES
Population	8,736	82,350	186,645
Average HH Income	\$110,223	\$110,101	\$73,609
Average HHs	4,316	38,450	79,665

TRAFFIC COUNT	
Orange Ave.	14,600 AADT
Orlando Ave.	34,748 AADT



Contact us now for more information

Kevin Hollenbeck

Property Manager

407-759-3399

khollenbeck@dresi.com

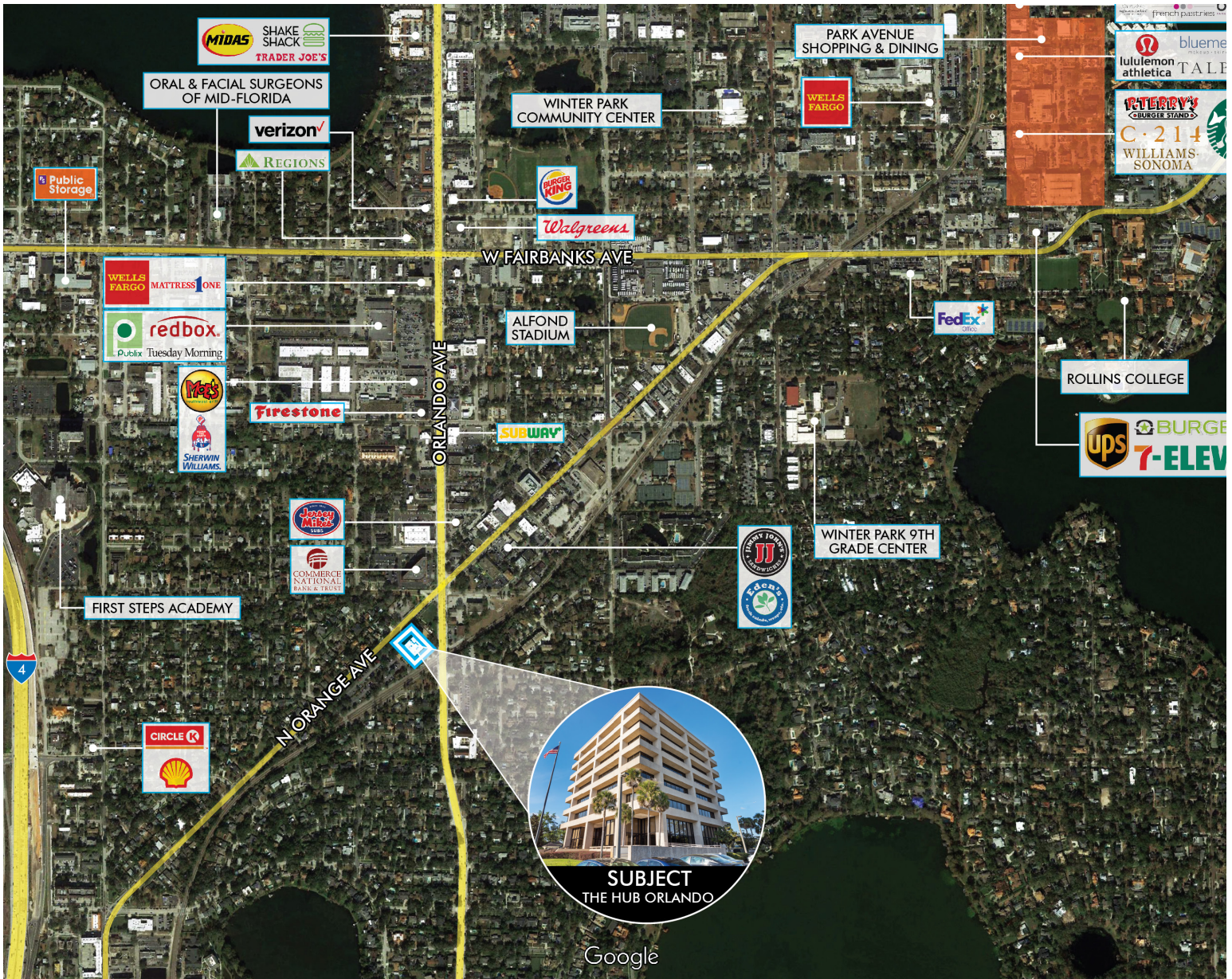
Demetree Real Estate Services

941 W. Morse Blvd, Suite 315 | Winter Park, FL 32789

DemetreeRealEstate.com

No warranty or representation, express or implied, is made as to the accuracy of the information contained herein, and same is submitted subject errors, omissions, change of price, rental or other conditions, withdrawal without notice, and to any special listing and conditions imposed by our principals.

Aerial Map



Contact us now for more information

Kevin Hollenbeck

Property Manager

407-759-3399

khollenbeck@dresi.com

Demetree Real Estate Services

941 W. Morse Blvd, Suite 315 | Winter Park, FL 32789

DemetreeRealEstate.com

No warranty or representation, express or implied, is made as to the accuracy of the information contained herein, and same is submitted subject errors, omissions, change of price, rental or other conditions, withdrawal without notice, and to any special listing and conditions imposed by our principals.