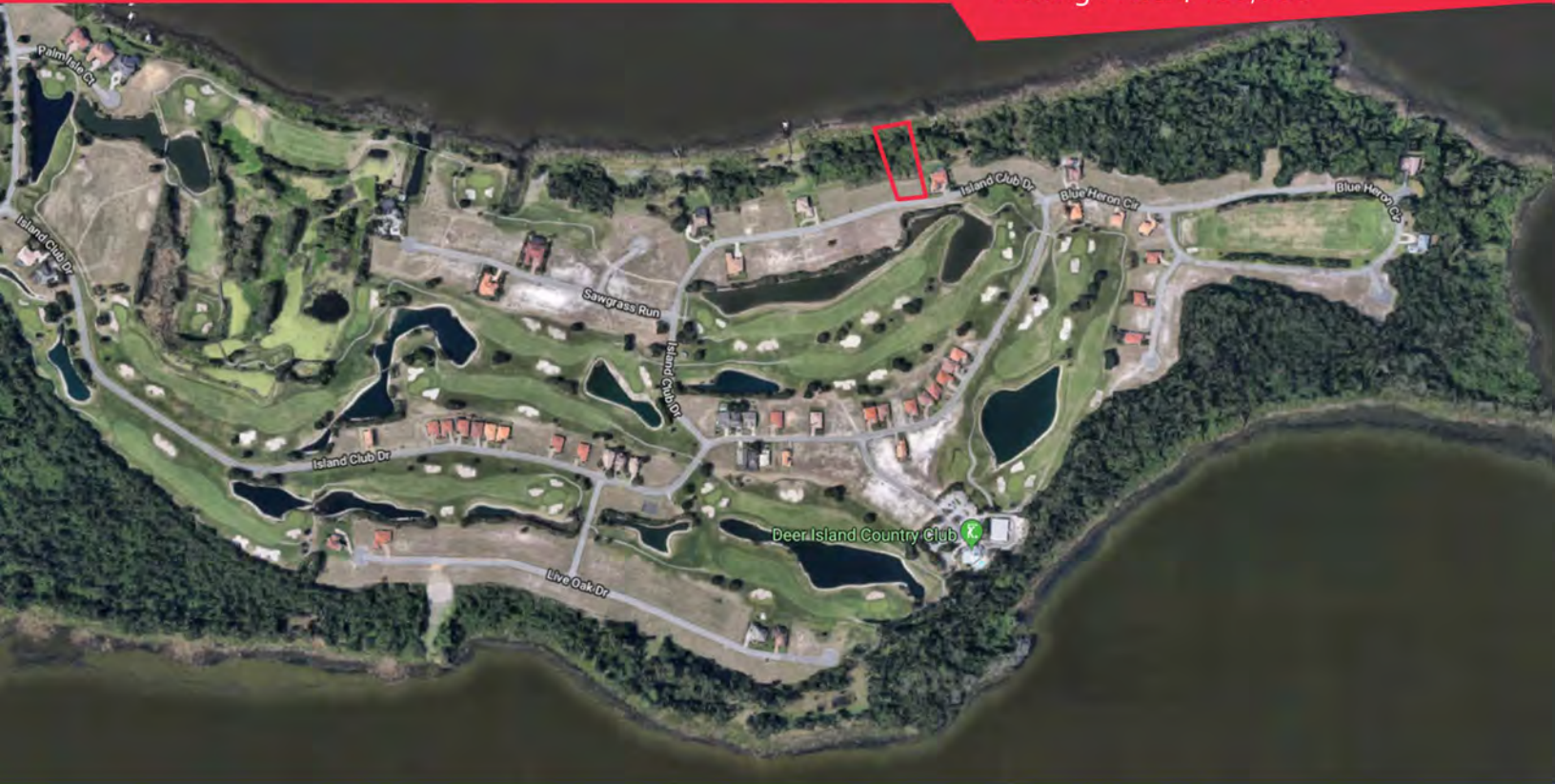


# Residential Lot

Tavares, FL

**DEMETREE**  
GLOBAL

Asking Price: \$460,000



Lakefront lot on Lake Dora located within gated community of Deer Island Golf and Country Club.

## Property Features:

- 268 Lot community situated on the secluded 400-acre Deer Island, amidst the Harris Chain of Lakes part of Oklawaha River Basin in Tavares, Florida.
- Deer Island Country Club is home to Central Florida's only island golf course. It's a semi-private, 18-hole golf course offering breathtaking views of Lake Dora and Lake Beauclaire. Florida's largest chain of natural lakes makes this a paradise for golfers, boaters and nature lovers.

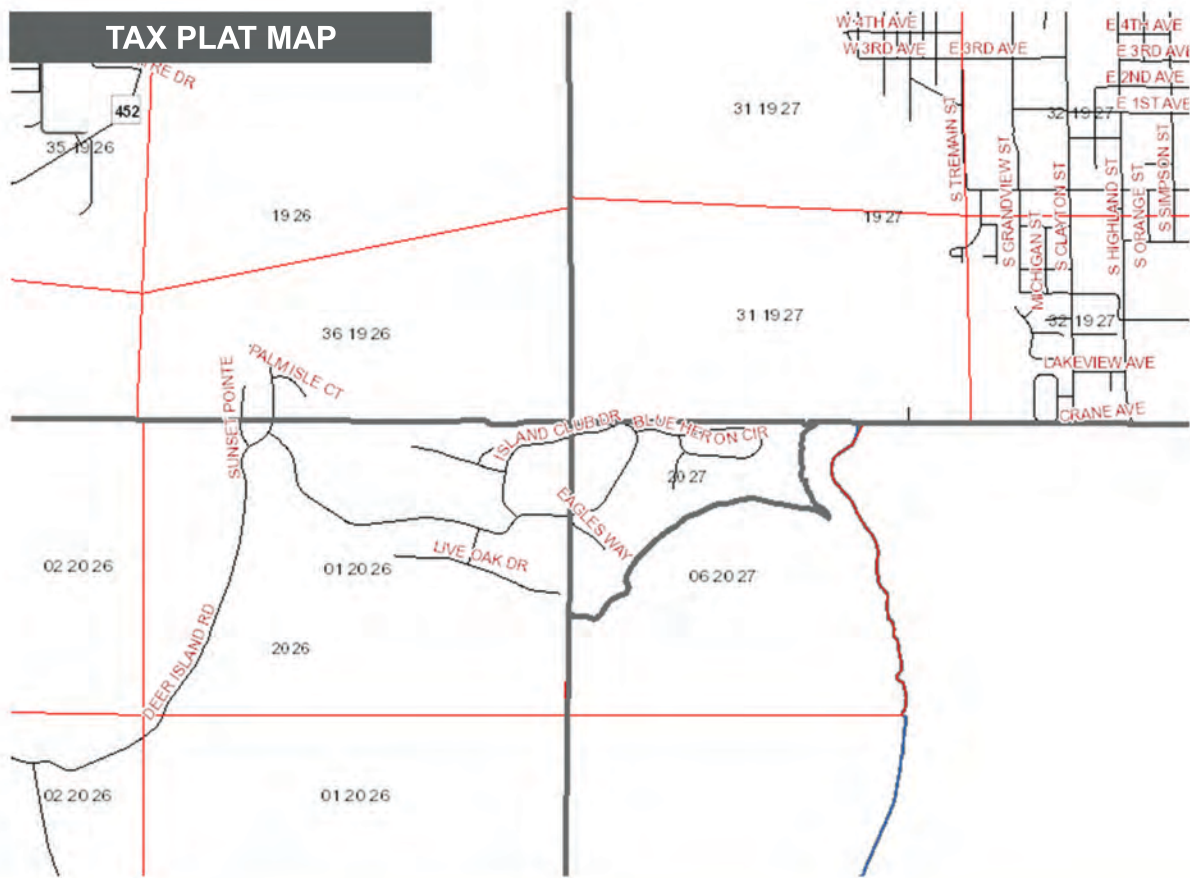
## ZONING DESIGNATIONS

Zoning Jurisdiction:	Lake County
Zoning Classification:	PUD
Future Land Use:	PUD

Contact us for more information

Rusty Stoeckel  
**Broker/Associate**  
Main: (407) 915-0188  
Email: [rusty@dresi.com](mailto:rusty@dresi.com)

Demetree Global  
941 W Morse Blvd, Suite 315  
Winter Park, FL 32789  
[DemetreeGlobal.com](http://DemetreeGlobal.com)



## PARCEL ID'S

36-19-26-2005-00H-00900

## DEMOGRAPHICS

### Population

1 Mile

2019 Total Population:  
2024 Population:  
Pop. Growth 2019-2024:  
Average Age

220  
244  
10.91%  
44.6t

### Housing

1 Mile

Median Home Value:  
Median Year Built:

\$288,234  
1987

### Households

1 Mile

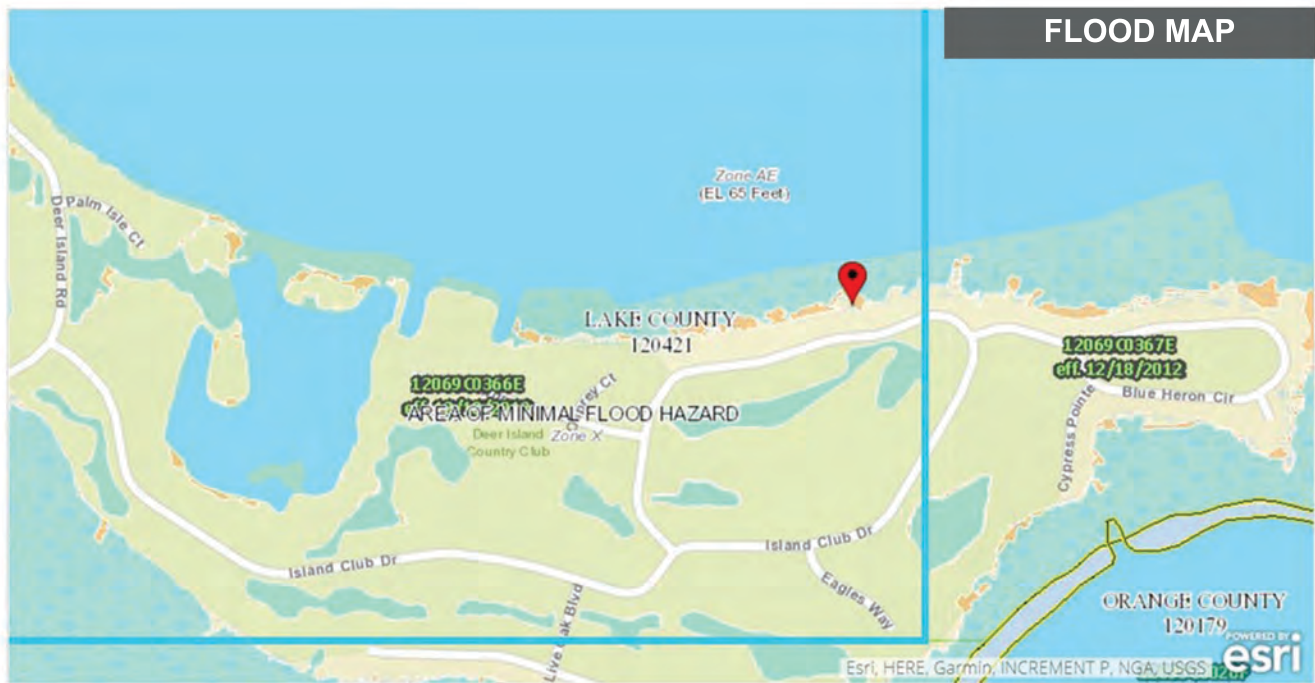
2019 Total Households:  
HH Growth 2019-2024  
Median Household Inc:  
Avg Household Size:

78  
11.54%  
\$78,409  
2.6

## COMMUNITY NOTES

268 Lot community situated on the secluded 400-acre Deer Island, amidst the Harris Chain of Lakes part of Oklawaha River Basin in Tavares, Florida.  
Deer Island Country Club is home to Central Florida's only island golf course. It's a semi-private, 18-hole golf course offering breathtaking views of Lake Dora and Lake Beauclair. Florida's largest chain of natural lakes makes this a paradise for golfers, boaters and nature lovers.  
Deer Island homeowners and guests enjoy the Island lifestyle and its focus in every direction -- water and golf.





## SITE DESCRIPTION

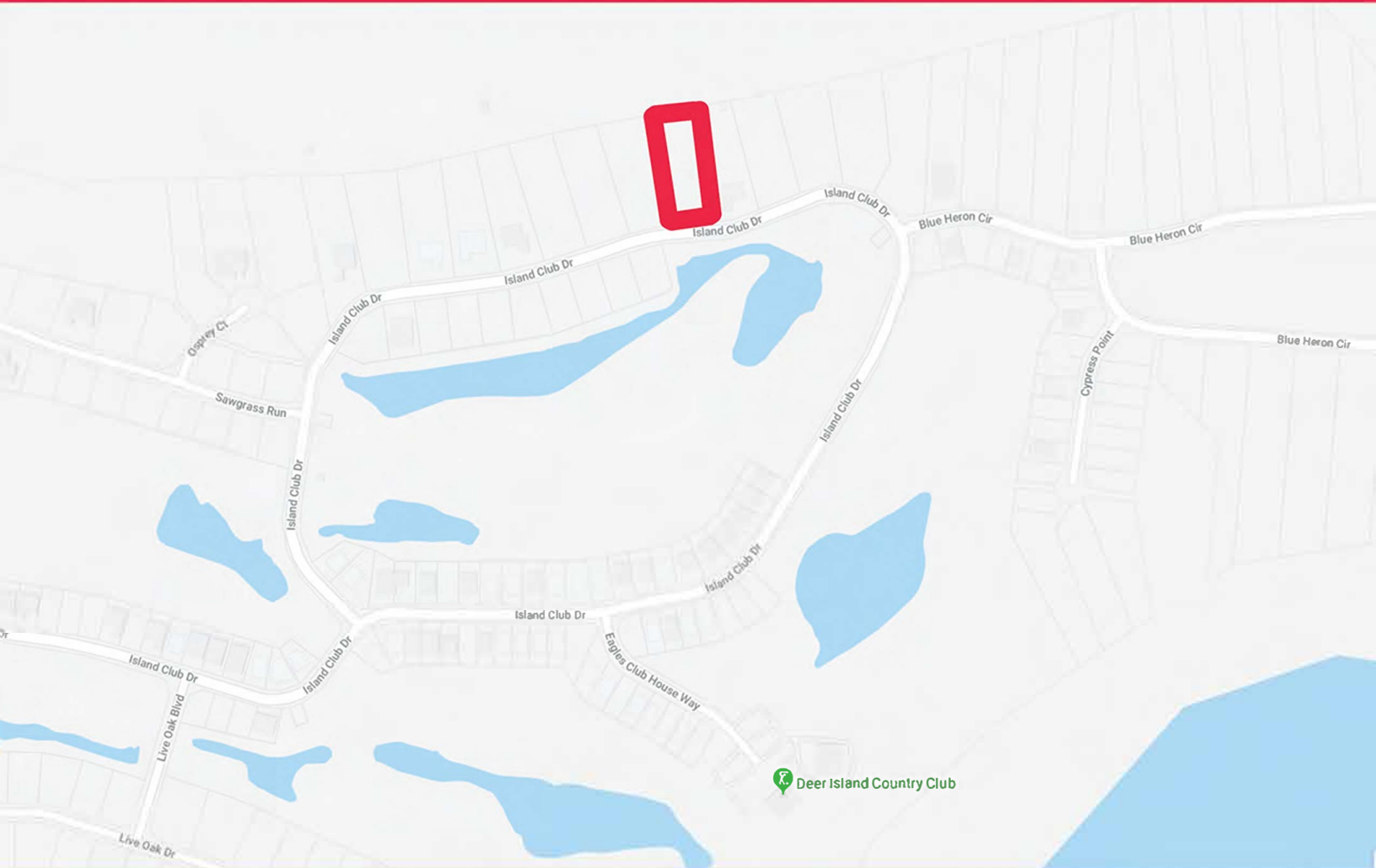
Gross:	0.91 Acres or 39,640 SqFt
Net/Usable:	0.45 Acres or 19,602 SqFt
Usable %:	49.50%
Shape:	Rectangular
Utilities:	All Utilities Available

## ZONING DESIGNATIONS

Zoning Jurisdiction:	Lake County
Zoning Classification:	PUD
Future Land Use:	PUD



## Satellite Map



Contact us for more information

Rusty Stoeckel  
Broker/Associate  
Main: (407) 915-0188  
Email: [rusty@dresi.com](mailto:rusty@dresi.com)

Demetree Global  
941 W Morse Blvd, Suite 315  
Winter Park, FL 32789  
[DemetreeGlobal.com](http://DemetreeGlobal.com)

No warranty or representation, express or implied, is made as to the accuracy of the information contained herein, and same is submitted subject to errors, omissions, change of price, or other conditions, without notice, and to any special listing and conditions imposed by or on participants.