

Residential Lot

Fruitland Park, FL

Call for Pricing



Located on Atlantic Ave in Fruitland Park, FL just west of US Hwy 441 at S Dixie Avenue, less than 5 Miles from the Villages.

Property Features:

- The property is Phase 2 of Mirror Lake Village (90 lots in phase 1) and close to a Walmart Supercenter and ALDI (2 miles).
- It is about a 10 minute drive to to Bonifay Golf & Country Club and The Villages.
- Fruitland Park is the gateway to the State of Florida's Lake Griffin State Park. This park offers an amphitheater, boating, tours, camping, canoeing, kayaking, hiking and nature trails, fishing, and a picnic area.

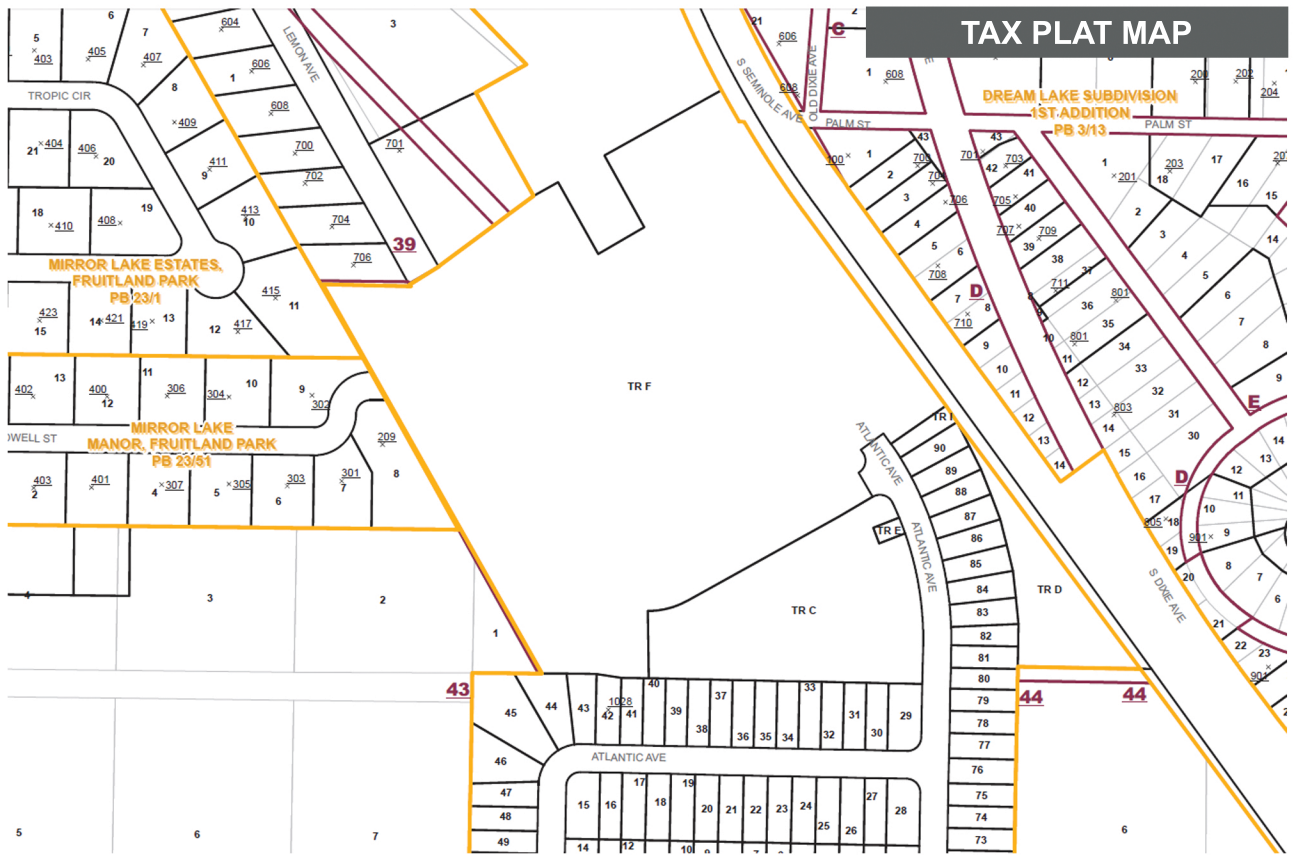
ZONING DESIGNATIONS

Zoning Jurisdiction:	Lake County
Zoning Classification:	PUD- Residential
Future Land Use:	Residential
Allowable Uses:	76, 40 foot, Single Family Lots

Contact us for more information

Demetree Real Estate Services
Main: (407) 759-3399
Email: leasing@dresi.com

Demetree Global
941 W Morse Blvd, Suite 315
Winter Park, FL 32789
DemetreeGlobal.com



PARCEL ID'S

091924140000F00000

DEMOGRAPHICS

Population	1 Mile	3 Mile	5 Mile
2019 Total Population:	3,874	25,755	46,819
2024 Population:	4,349	28,963	53,192
Pop. Growth 2019-2024:	12.26%	12.46%	13.61%
Average Age	40.2	45	45.8
Housing	1 Mile	3 Mile	5 Mile
Median Home Value:	\$95,865	\$124,481	\$138,300
Median Year Built:	1985	1984	1987
Households	1 Mile	3 Mile	5 Mile
2019 Total Households:	1,590	10,711	20,078
HH Growth 2019-2024	12.39%	11.92%	13.09%
Median Household Inc:	\$37,327	\$42,562	\$42,649
Avg Household Size:	2.4	2.3	2.2

COMMUNITY NOTES

The property is Phase 2 of Mirror Lake Village (90 lots in phase 1) and close to a Walmart Supercenter and ALDI (2 miles). It is about a 10 minute drive to to Bonifay Golf & Country Club and The Villages. Fruitland Park is the gateway to the State of Florida's Lake Griffin State Park. This park offers an amphitheater, boating, tours, camping, canoeing, kayaking, hiking and nature trails, fishing, and a picnic area.



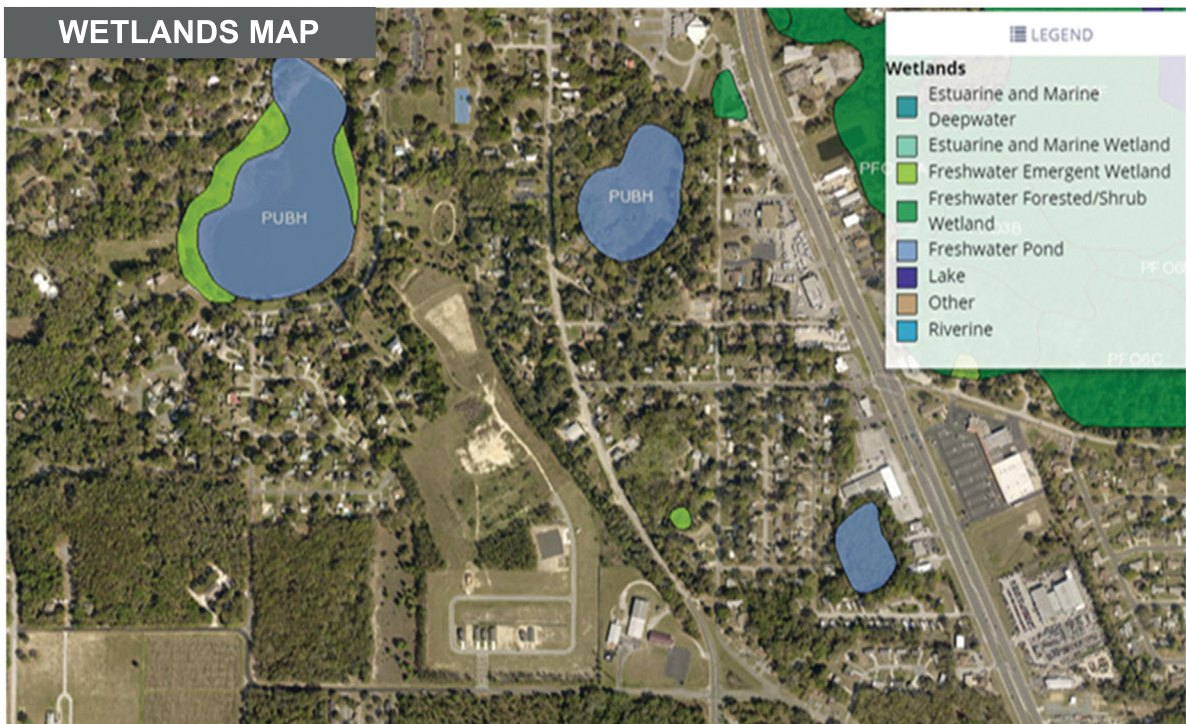
SITE DESCRIPTION

Gross: 14.17 Acres or 617,245 Sq/Ft
 Interior or Corner: Interior
 Utilities: All Utilities Available

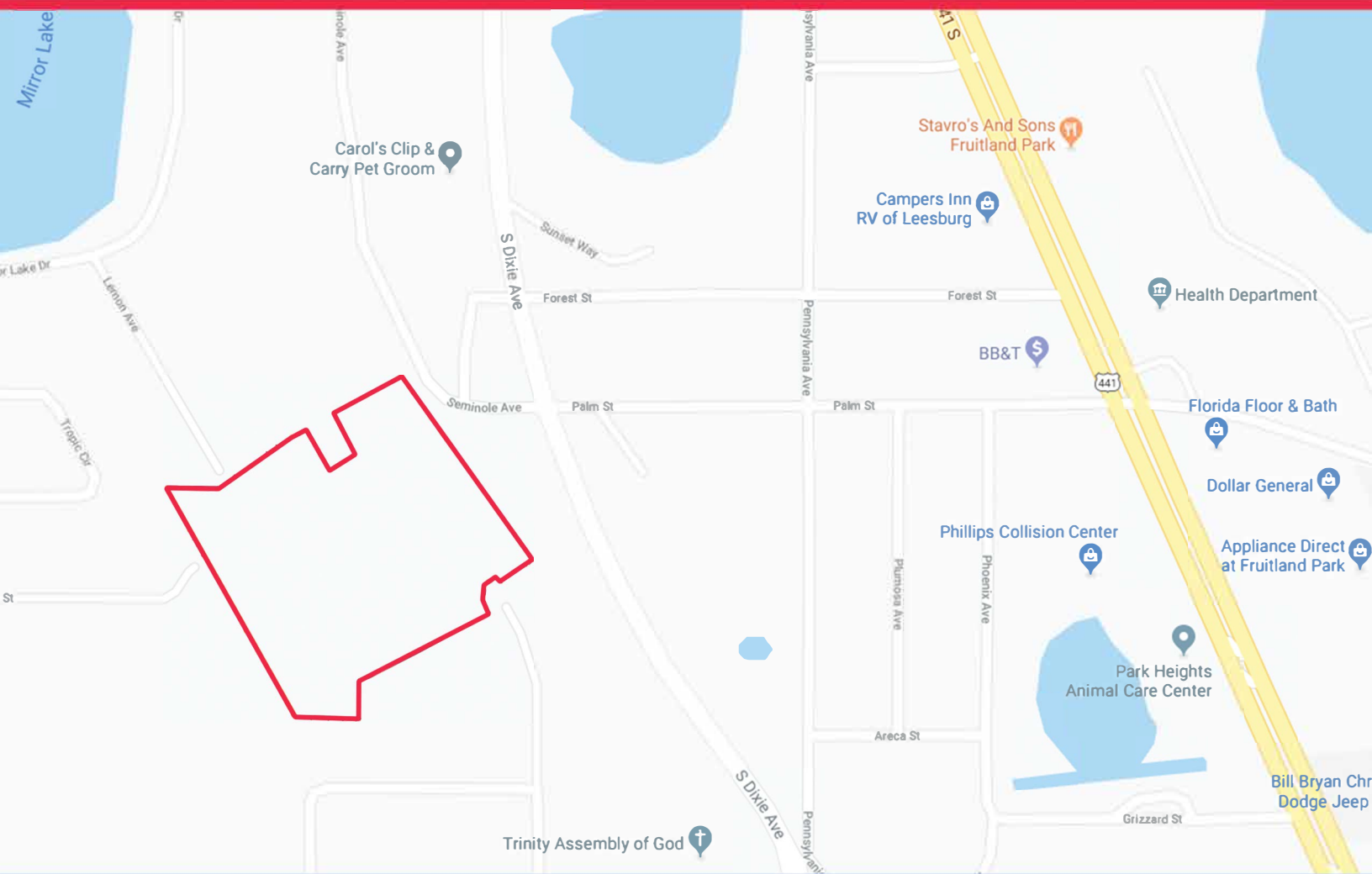
ZONING DESIGNATIONS

Zoning Jurisdiction: Lake County
 Zoning Classification: PUD- Residential
 Future Land Use: Residential
 Allowable Uses: 76, 40 foot, Single Family Lots

WETLANDS MAP



Satellite Map



Contact us for more information

Demetree Real Estate Services
Main: (407) 759-3399
Email: leasing@dresi.com

Demetree Global
941 W Morse Blvd, Suite 315
Winter Park, FL 32789
DemetreeGlobal.com