

Ground Lease / Build to Suit 0.83 Acre Commercial Lot Satellite Beach, FL



FOR LEASE | LAND



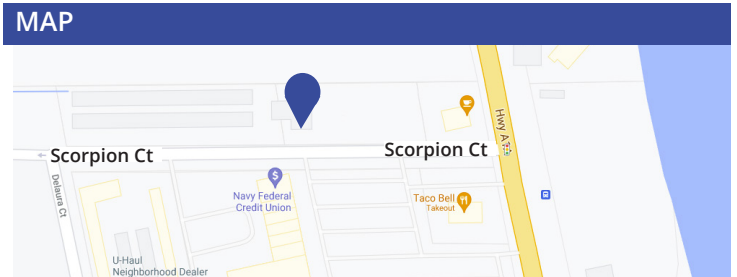
100 Scorpion Ct. Satellite Beach, FL, 32937

PROPERTY FEATURES:

- Adjacent to Satellite High School, DeLaura Middle School, and Holland Elementary School
- 0.83 Acres
- 2,300 square foot building on site
- Development on 222-room hotel and 147 condos to a mixed-use community approved

2020 DEMOGRAPHICS	3 MILE	5 MILES	7 MILES
Population	26,076	35,226	58,267
Average HH Income	\$109,710	\$78,411	\$91,928
Medium Age	50.4	47.3	48.6
Daytime Population	23,334	34,829	63,028

TRAFFIC COUNT	
Hwy A1A	28,500 AADT



Contact us now for more information

RUSTY STOECKEL
Broker/Associate
407-449-1881
rusty@dresi.com

Demetree Real Estate Services
941 W. Morse Blvd, Suite 315 | Winter Park, FL 32789
DemetreeRealEstate.com

No warranty or representation, express or implied, is made as to the accuracy of the information contained herein, and same is submitted subject errors, omissions, change of price, rental or other conditions, withdrawal without notice, and to any special listing and conditions imposed by our principals.

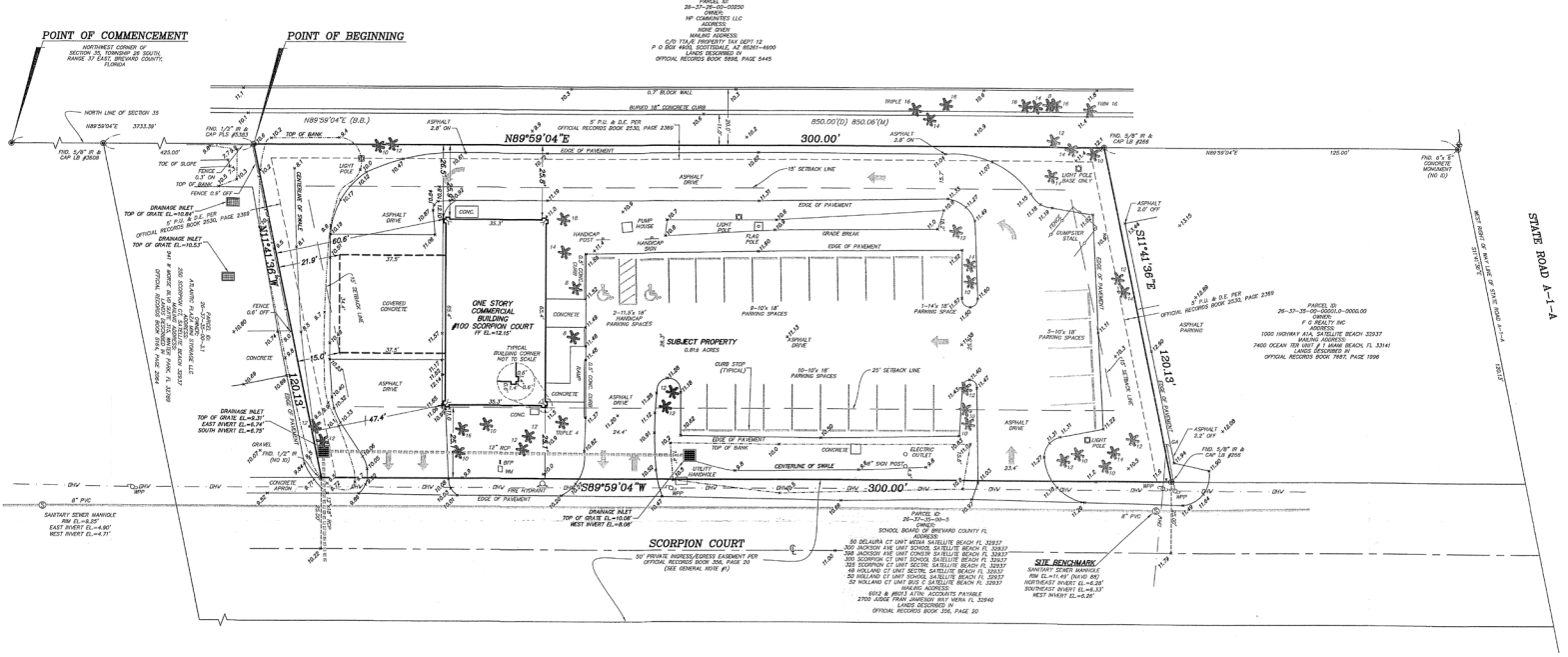
Market Aerial



Demetree Real Estate Services | 941 W. Morse Blvd, Suite 315 | Winter Park, FL 32789 | DemetreeRealEstate.com

No warranty or representation, express or implied, is made as to the accuracy of the information contained herein, and same is submitted subject errors, omissions, change of price, rental or other conditions, withdrawal without notice, and to any special listing and conditions imposed by our principals.

Survey Plan



Demetree Real Estate Services | 941 W. Morse Blvd, Suite 315 | Winter Park, FL 32789 | DemetreeRealEstate.com

No warranty or representation, express or implied, is made as to the accuracy of the information contained herein, and same is submitted subject errors, omissions, change of price, rental or other conditions, withdrawal without notice, and to any special listing and conditions imposed by our principals.