

Call for Pricing



Four parcels located at Collette Ridge Circle and two on Merryvale Drive.

### Property Features:

- The Bluffs of Wilson Creek is just minutes away from Charlotte and close to Pisgah National Forest.
- This location provides quick access for hiking, fishing, kayaking.
- Ski slopes are nearby for snowboarding and skiing.

### ZONING DESIGNATIONS

Zoning Jurisdiction:	RA-20
Zoning Classification:	Residential
Future Land Use:	Rural AC

Contact us for more information

Lori Koogler  
Senior Director of Acquisition & Leasing  
Main: (407) 603-9294  
Email: lkoogler@dresi.com

Demetree Global  
941 W Morse Blvd, Suite 315  
Winter Park, FL 32789  
[DemetreeGlobal.com](http://DemetreeGlobal.com)



## PARCEL ID'S

- 04 4 3A100
- 04 4 3A158
- 04 4 3A159
- 04 4 3A160
- 04 4 3A161
- 04 4 3A162

## DEMOGRAPHICS

Population		Cadwell County
2019 Total Population:		83,804
Pop. Growth 2019-2024:		0.18%
Housing		Cadwell County
Median Home Value:		\$166,880
Median Year Built:		1993
Households		Cadwell County
HH Growth 2019-2024		0.25%
Median Household Inc:		\$45,734
Avg Household Size:		2.4

## COMMUNITY NOTES

The Bluffs of Wilson Creek is just minutes away from Charlotte and close to Pisgah National Forest. This location provides quick access for hiking, fishing, kayaking. Ski slopes are nearby for snowboarding and skiing.



## SITE DESCRIPTION

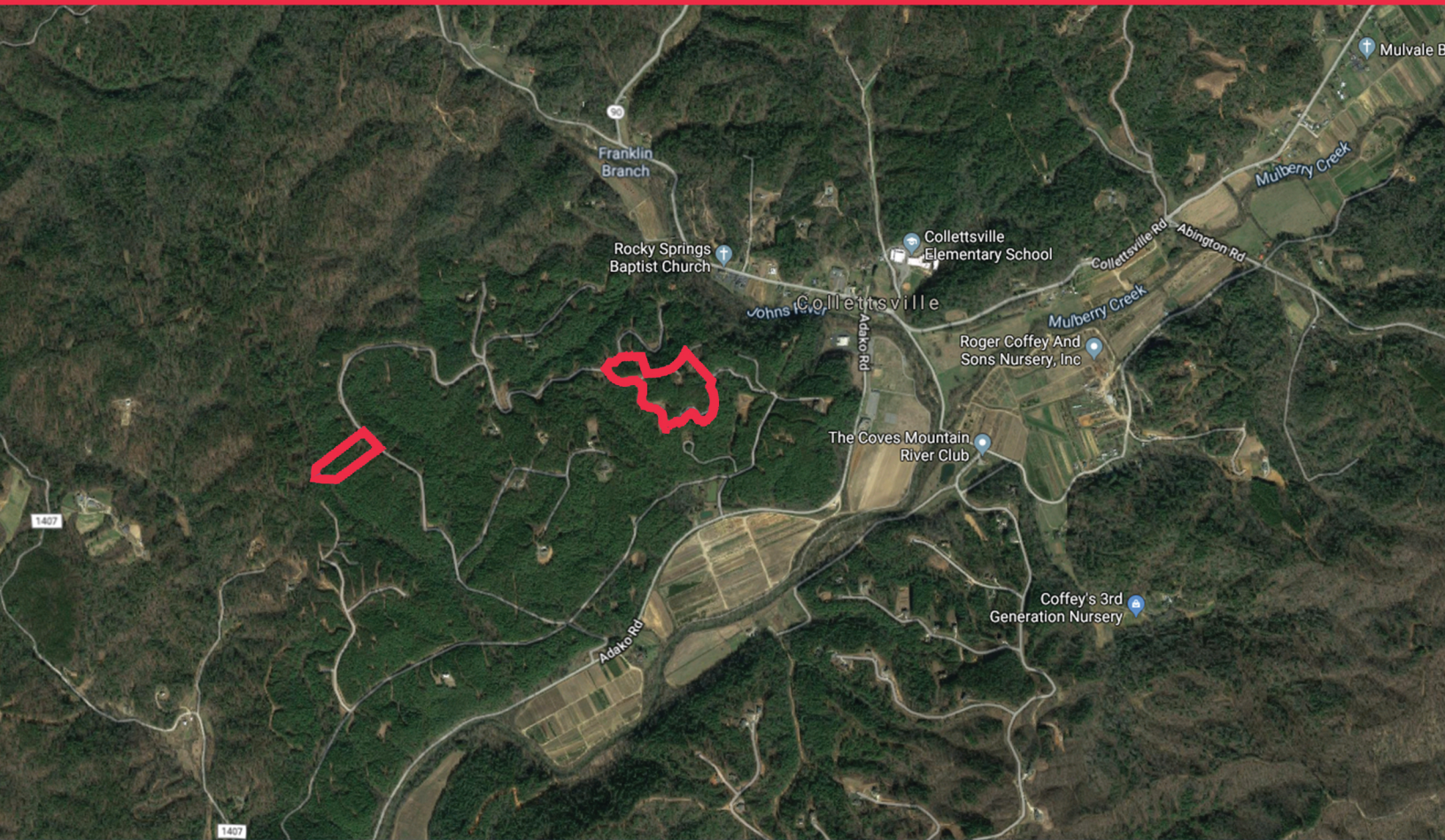
Gross	14.87 Acres or 647,737 SF
Shape	Irregular
Utilities	Utilities Available

## ZONING DESIGNATIONS

Zoning Jurisdiction:	RA-20
Zoning Classification:	Residential
Future Land Use:	Rural AC



## Satellite Map



Contact us for more information

Lori Koogler  
Senior Director of Acquisition & Leasing  
Main: (407) 603-9294  
Email: lkoogler@dresi.com

Demetree Global  
941 W Morse Blvd, Suite 315  
Winter Park, FL 32789  
[DemetreeGlobal.com](http://DemetreeGlobal.com)