

Make  
the right  
Move



# Woodlake Villas

**GET IN TOUCH:**

[www.Woodlakevillas.com](http://www.Woodlakevillas.com)  
P: 407- 326 6779  
E: [info@woodlakevillas.com](mailto:info@woodlakevillas.com)

**ADDRESS:**

720 S. Conway Rd.  
Orlando, FL 32807

**OFFICE HOURS:**

MONDAY - FRIDAY  
9:00AM - 6:00PM  
SATURDAY  
10:00AM - 5:00PM  
SUNDAY  
12:00PM - 4:00PM

Managed by:



# Woodlake Villas



Come home to Woodlake Villas Apartments near downtown Orlando, FL! We are here to accommodate your every need with our beautiful, newly renovated, spacious apartments and convenient location.

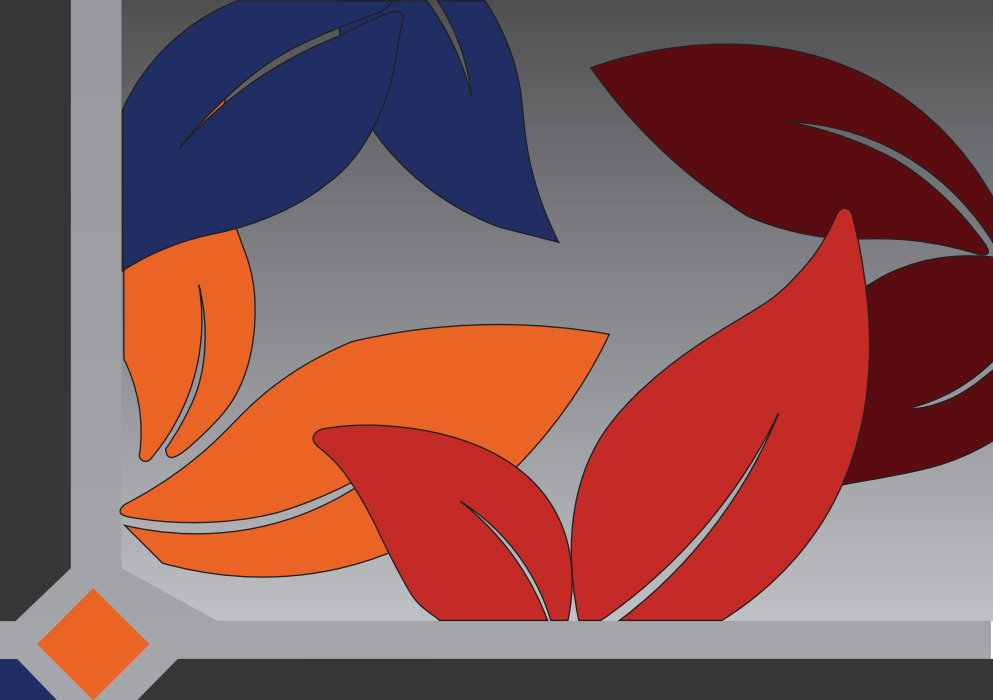
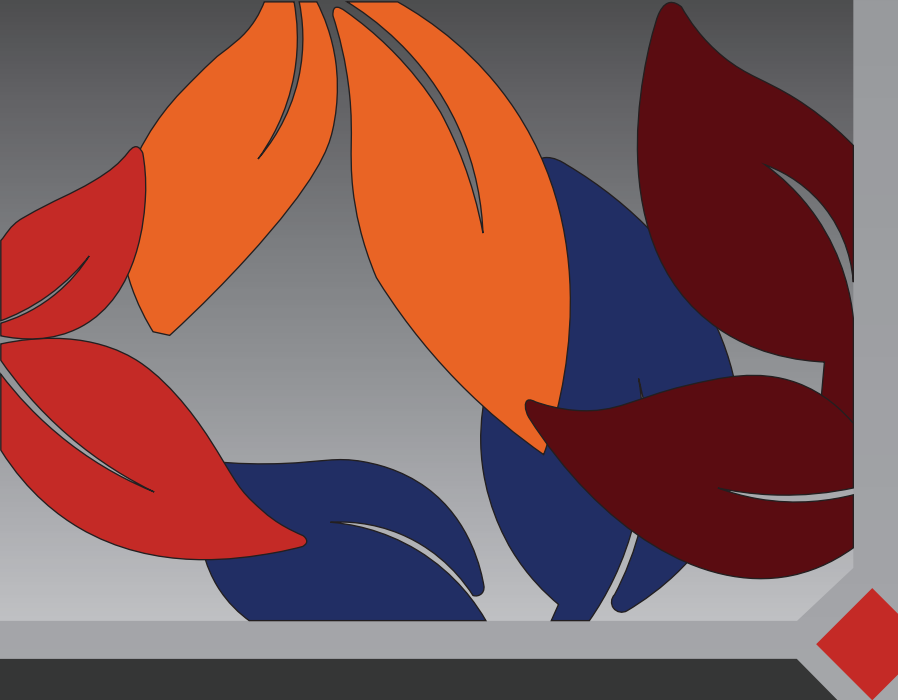
Enjoy the pleasures of living right off Lake Underhill where an abundance of outdoor activities are right at your fingertips. Our apartments for rent in Orlando are just a short drive from restaurants, shopping centers and attractions.

You can also stay in and relax by one of our two swimming pools, taking in the calming atmosphere. Why spend your life looking, when you can spend it living in one of our centrally located apartments!

[www.Woodlakevillas.com](http://www.Woodlakevillas.com)

[www.Woodlakevillas.com](http://www.Woodlakevillas.com)

[www.Woodlakevillas.com](http://www.Woodlakevillas.com)



**COMMUNITY AMENITIES:**

- Two Sparkling Swimming Pools
- Tennis Court / Recreation Area
- Fully Furnished Clubhouse
- Poolside Wi-Fi Access
- Poolside Kitchen with Grill
- On-Site Laundry Facility
- Package Acceptance and Email Notification of Delivery
- Online Rent Pay Service and Payments
- On-Site 24 Hour Maintenance
- On-Site Professional Management

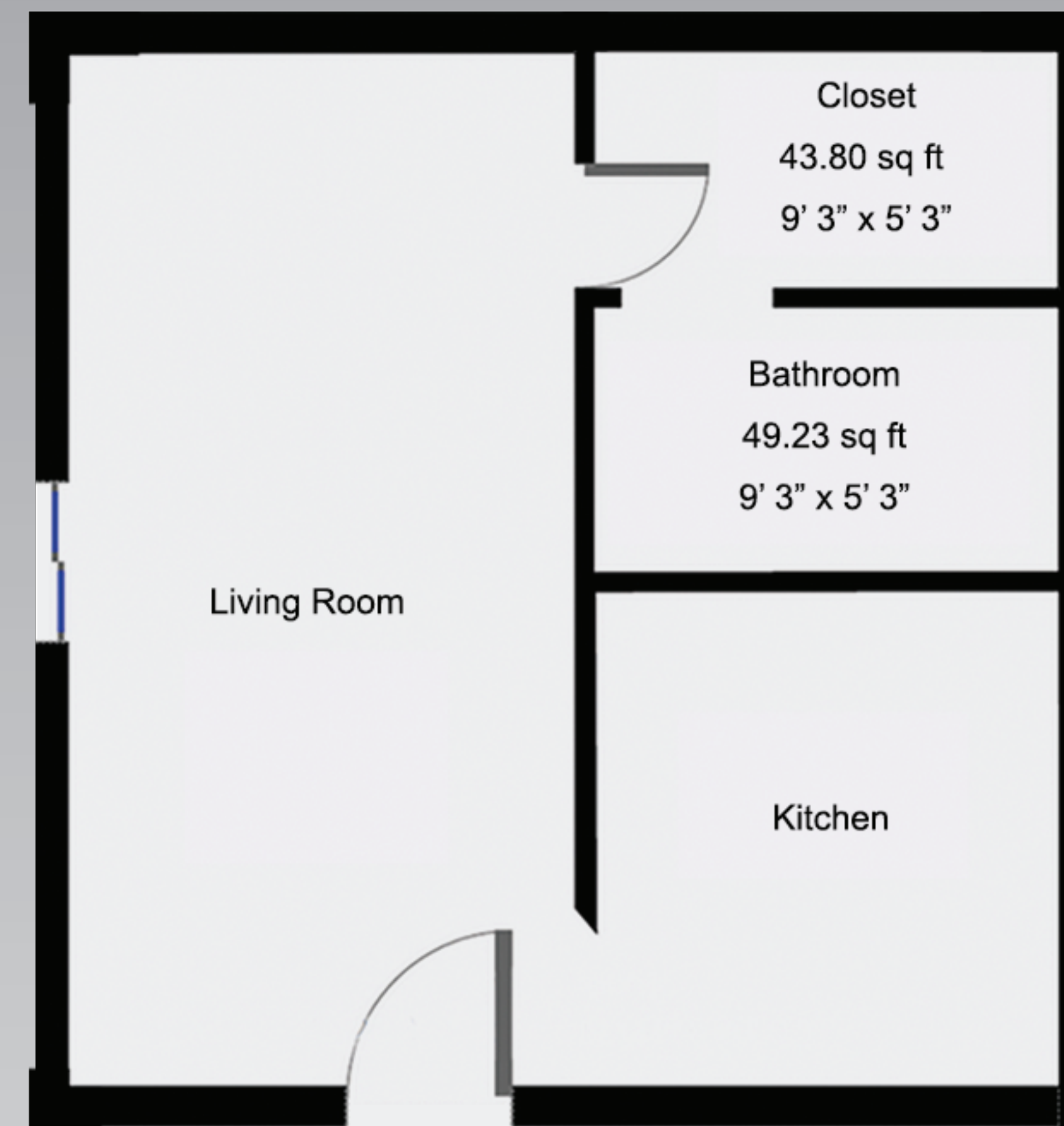
**APARTMENT AMENITIES:**

- Large Floorplans
- WD Hookup in select units
- Newly Renovated with Hardwood Floors
- Private Balcony / Patio
- Ample Parking
- Large Windows for an Abundance of Natural Light
- Additional Storage
- High Speed Internet Ready

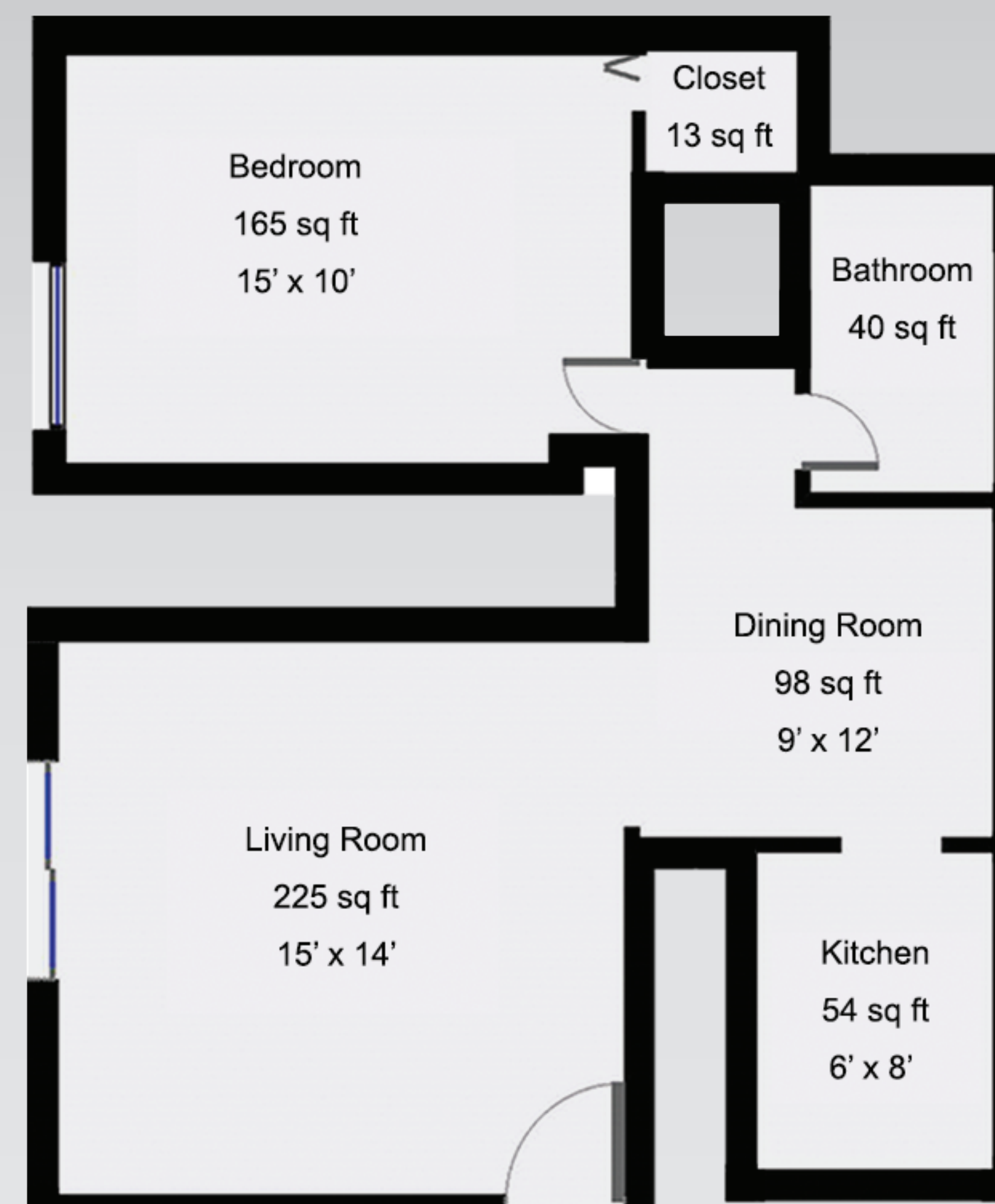
**PET FRIENDLY:**

- Plenty of Space for Your Dog to Run Around
- Cats and Dogs Allowed - Up to Two
- Pet Rent is an Extra \$10/mo
- Breed Restrictions Do Apply
- Dog Park Coming Soon

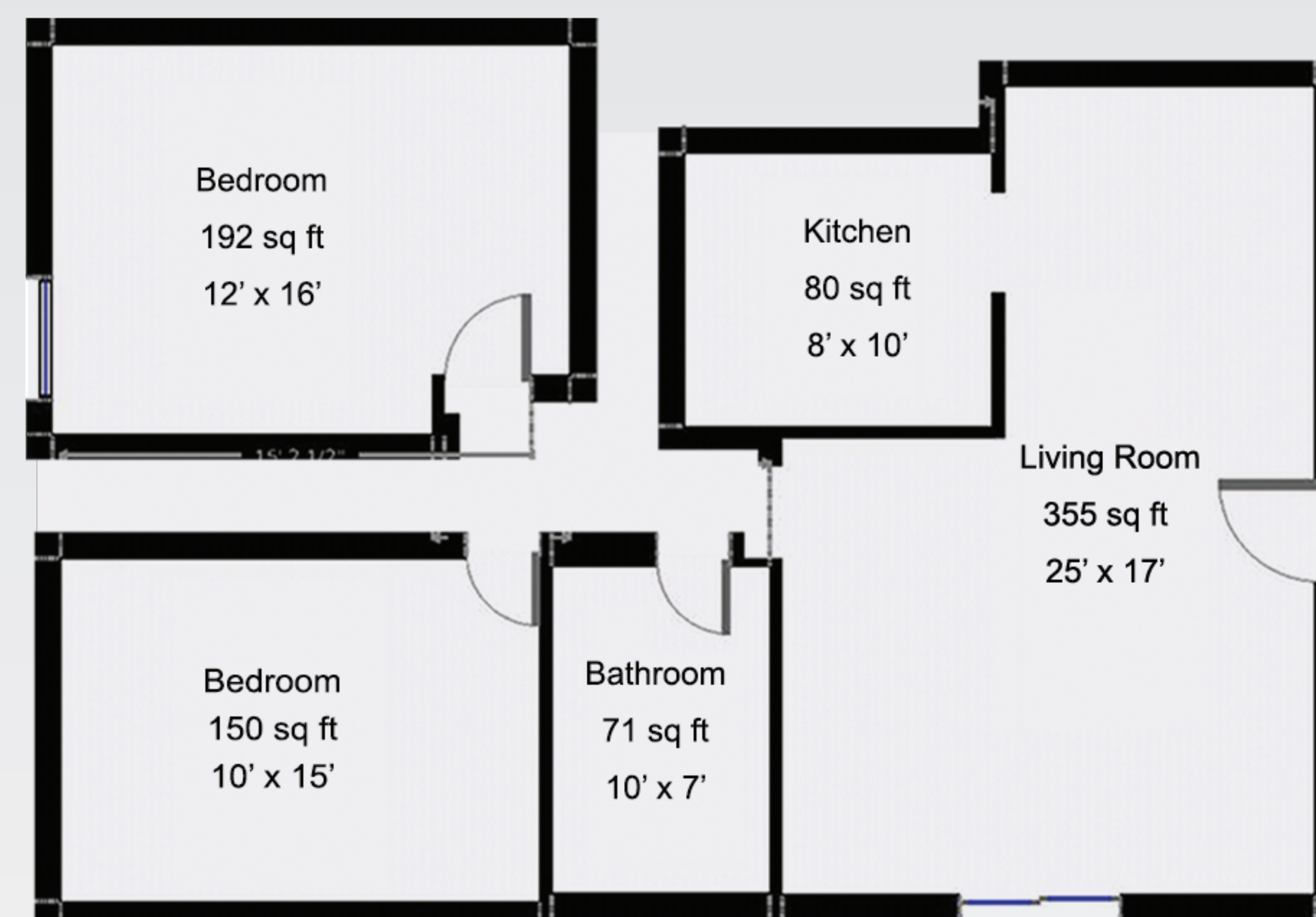
**Studio**  
450 SQ.FT



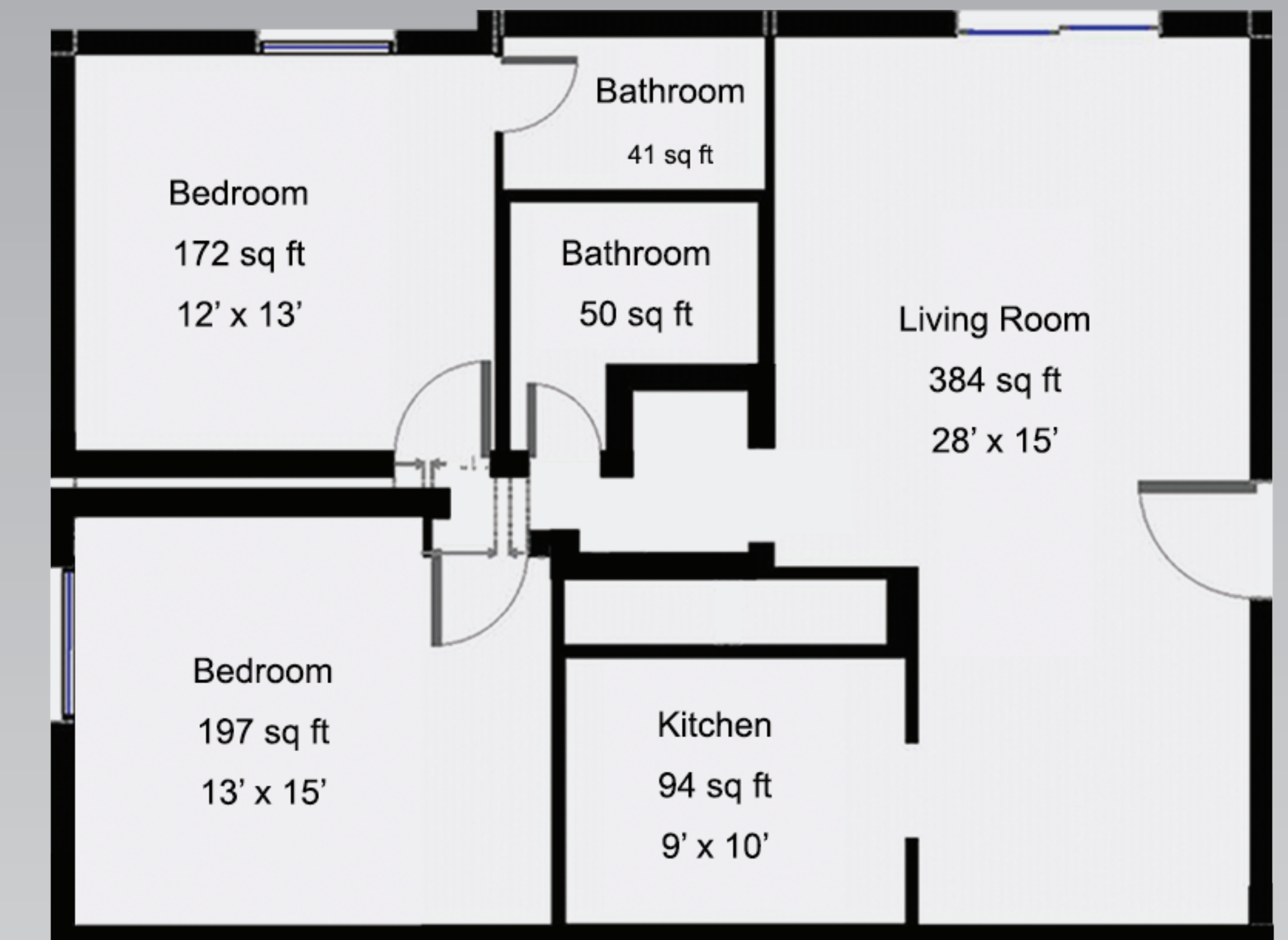
**1 Bed | 1 Bath**  
750 SQ.FT



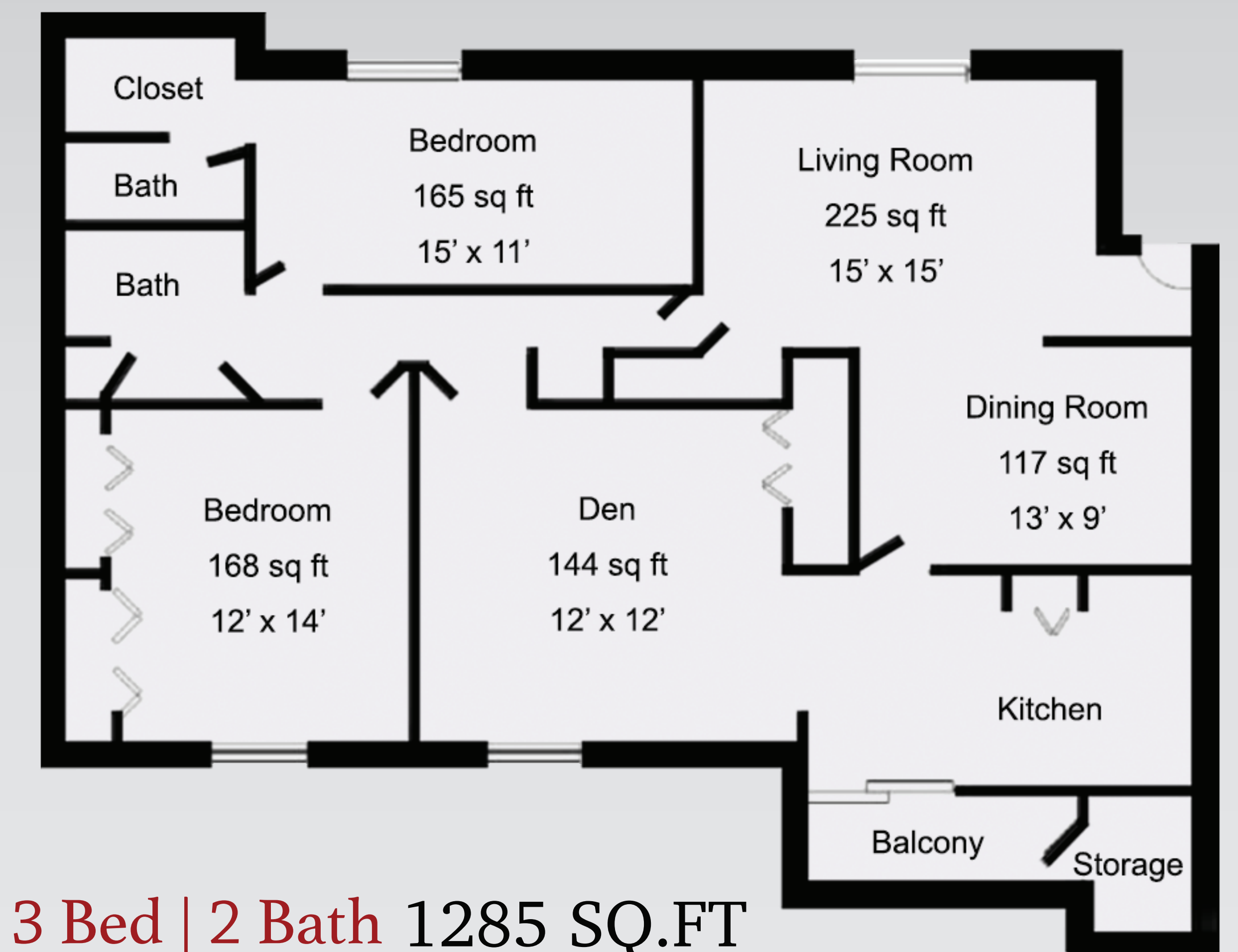
**2 Bed | 1 Bath** 1053 SQ.FT



**2 Bed | 2 Bath** 1144 SQ.FT



**2 Bed | 2 Bath W Den** 1544 SQ.FT



**3 Bed | 2 Bath** 1285 SQ.FT

