

Historic Downtown Office



FOR LEASE | OFFICE



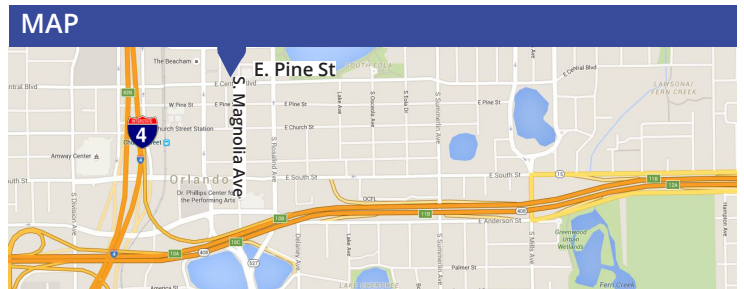
56 E. PINE ST. ORLANDO, FL 32801

PROPERTY FEATURES:

- Historic building located in the heart of the Downtown Central Business District
- Adjacent to The Cobb Plaza parking garage and entertainment/retail plaza
- Near City Hall and the Suntrust Building
- On-site restaurant
- Close to several parking structures, restaurants and entertainment options
- 937 SF - 5,256 SF available

| 2020 DEMOGRAPHICS | 1 MILE | 3 MILES | 5 MILES |
|--------------------------|----------|----------|----------|
| Population | 21,574 | 101,525 | 298,740 |
| Average HH Income | \$84,980 | \$87,159 | \$76,624 |
| Median Age | 39.0 | 40.0 | 37.2 |
| Total Daytime Population | 58,967 | 191,337 | 392,881 |

| TRAFFIC COUNT | |
|-------------------|-------------|
| S. Orange Ave | 19,561 AADT |
| S. Rosalind Ave.. | 31,929 AADT |



Contact us now for more information

KEVIN HOLLENBECK

Property Manager

407-759-3399

khollenbeck@dresi.com

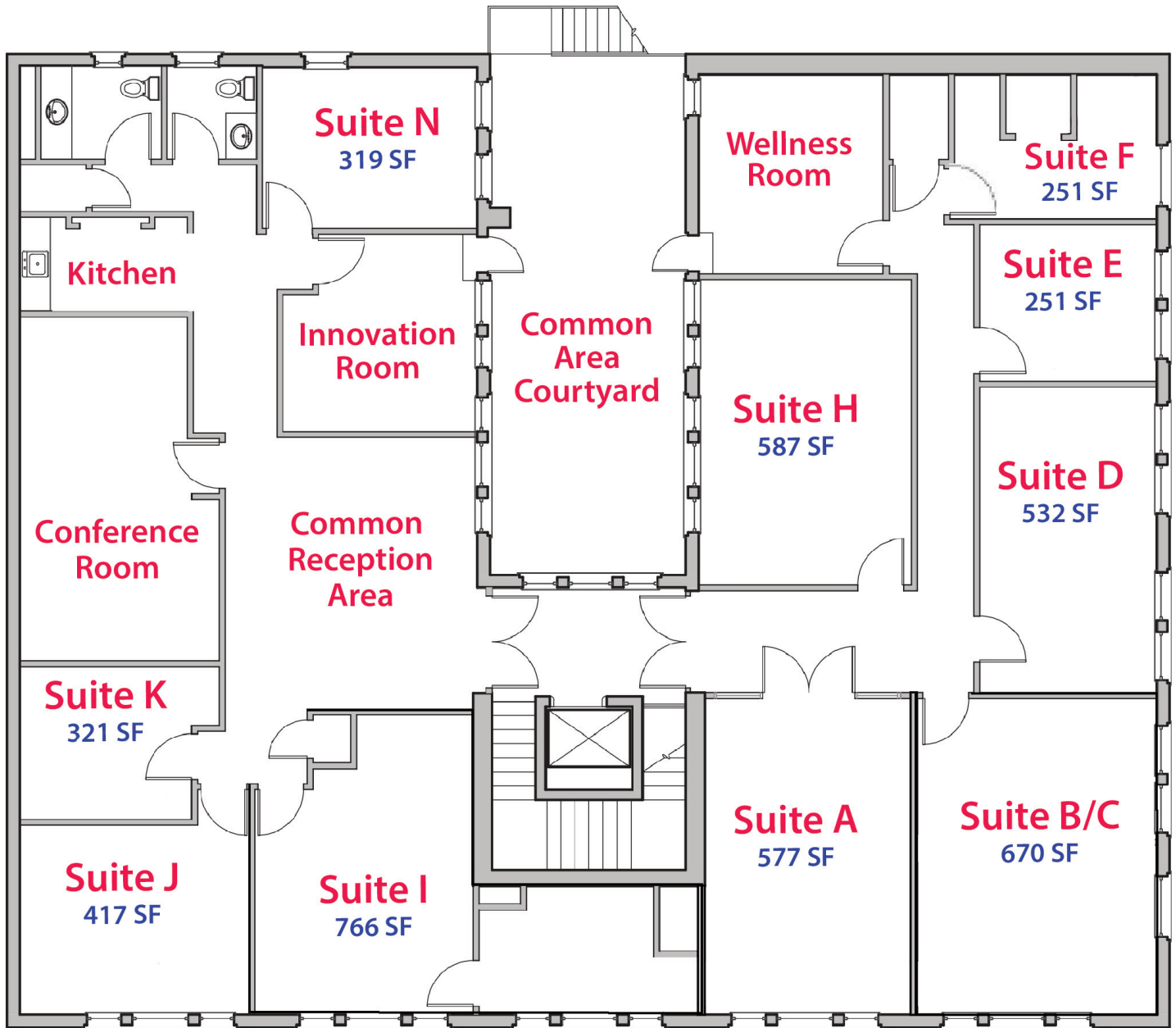
Demetree Real Estate Services

941 W. Morse Blvd, Suite 315 | Winter Park, FL 32789

DemetreeRealEstate.com

No warranty or representation, express or implied, is made as to the accuracy of the information contained herein, and same is submitted subject errors, omissions, change of price, rental or other conditions, withdrawal without notice, and to any special listing and conditions imposed by our principals.

Second Floor



Contact us now for more information

KEVIN HOLLENBECK

Property Manager

407-759-3399

khollenbeck@dresi.com

Demetree Real Estate Services

941 W. Morse Blvd, Suite 315 | Winter Park, FL 32789

DemetreeRealEstate.com

No warranty or representation, express or implied, is made as to the accuracy of the information contained herein, and same is submitted subject errors, omissions, change of price, rental or other conditions, withdrawal without notice, and to any special listing and conditions imposed by our principals.