

12,655 SF Office / Warehouse

Majority of Space is Air Conditioned

Orlando, FL



FOR LEASE



6756 EDGEWATER COMMERCE PKWY, ORLANDO, FL 32810

PROPERTY FEATURES:

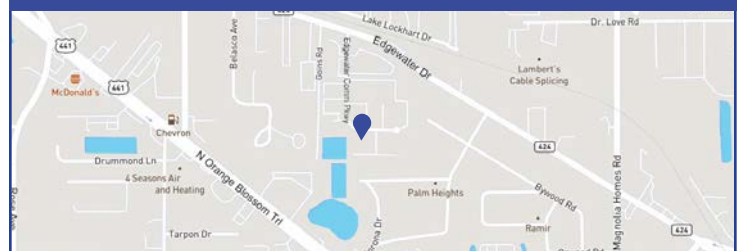
- Desirable size 12,655 sf of office warehouse
- Edgewater Commerce Parkway is located close to North Orange Blossom Trail, and Downtown Orlando
- 1,100 sf office space
- Five grade level roll up doors in the back of the building

2021 DEMOGRAPHICS	1 MILE	3 MILES	5 MILES
Population	13,305	92,727	261,370
Average HH Income	\$61,490	\$67,704	\$75,726
Median Age	34.8	35.8	37.3
Daytime Population	9,768	102,551	316,138

TRAFFIC COUNT

Edgewater Rd Ave.	21,000 AADT
Orange Blossom Trail Ave.	28,000 AADT

MAP



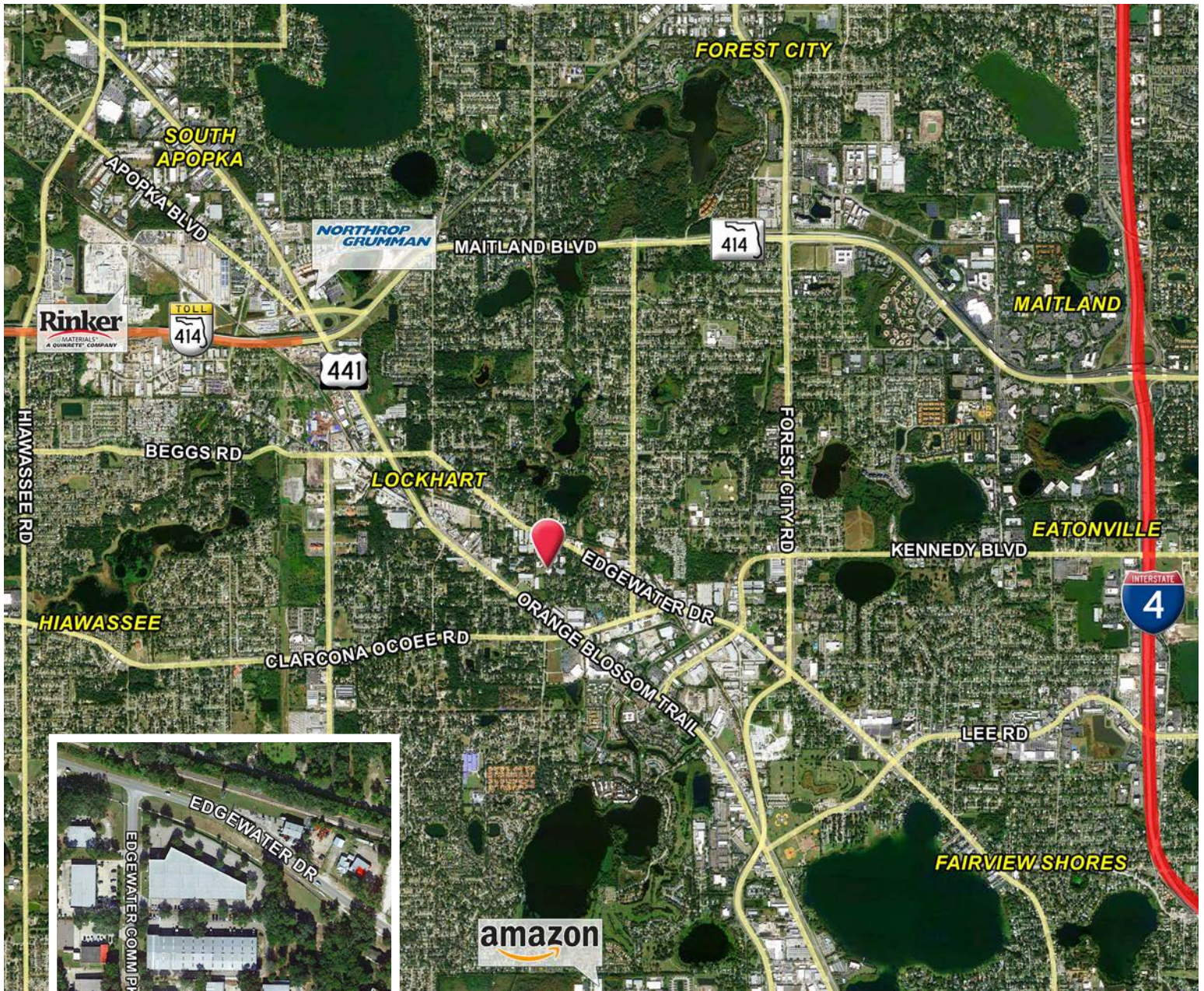
Contact us now for more information

RUSTY STOECKEL

Broker/Associate
407-422-8191
 rusty@dresi.com

Demetree Global
 941 W. Morse Blvd, Suite 315 | Winter Park, FL 32789
DemetreeGlobal.com

No warranty or representation, express or implied, is made as to the accuracy of the information contained herein, and same is submitted subject errors, omissions, change of price, rental or other conditions, withdrawal without notice, and to any special listing and conditions imposed by our principals.



Contact us now for more information

RUSTY STOECKEL

Broker/Associate

407-422-8191

rusty@dresi.com

Demetree Global

941 W. Morse Blvd, Suite 315 | Winter Park, FL 32789

DemetreeGlobal.com

Exterior / Interior Images

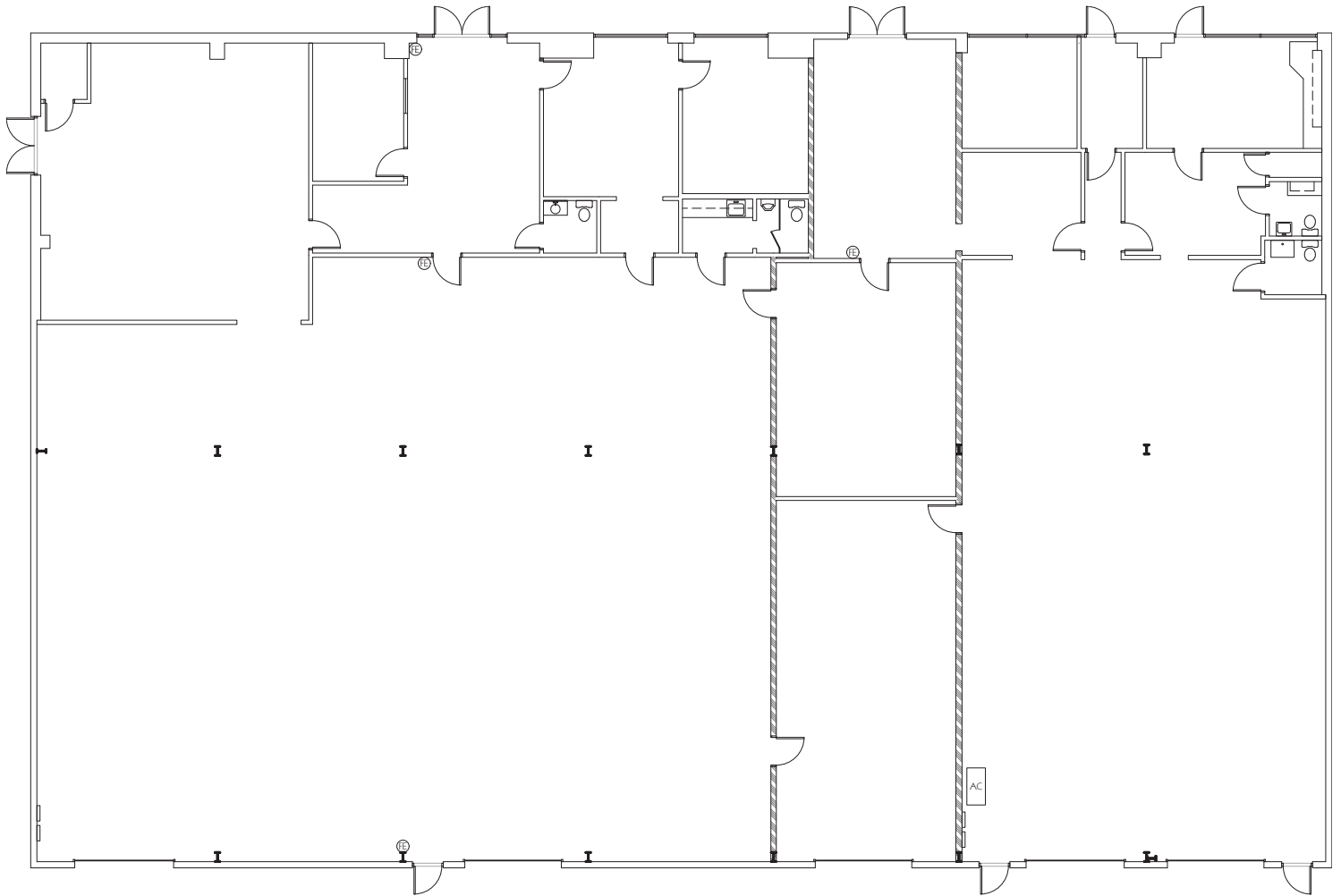


Contact us now for more information

RUSTY STOECKEL
Broker/Associate
407-422-8191
rusty@dresi.com

Demetree Global
941 W. Morse Blvd, Suite 315 | Winter Park, FL 32789
DemetreeGlobal.com

No warranty or representation, express or implied, is made as to the accuracy of the information contained herein, and same is submitted subject errors, omissions, change of price, rental or other conditions, withdrawal without notice, and to any special listing and conditions imposed by our principals.



Contact us now for more information

RUSTY STOECKEL

Broker/Associate

407-422-8191

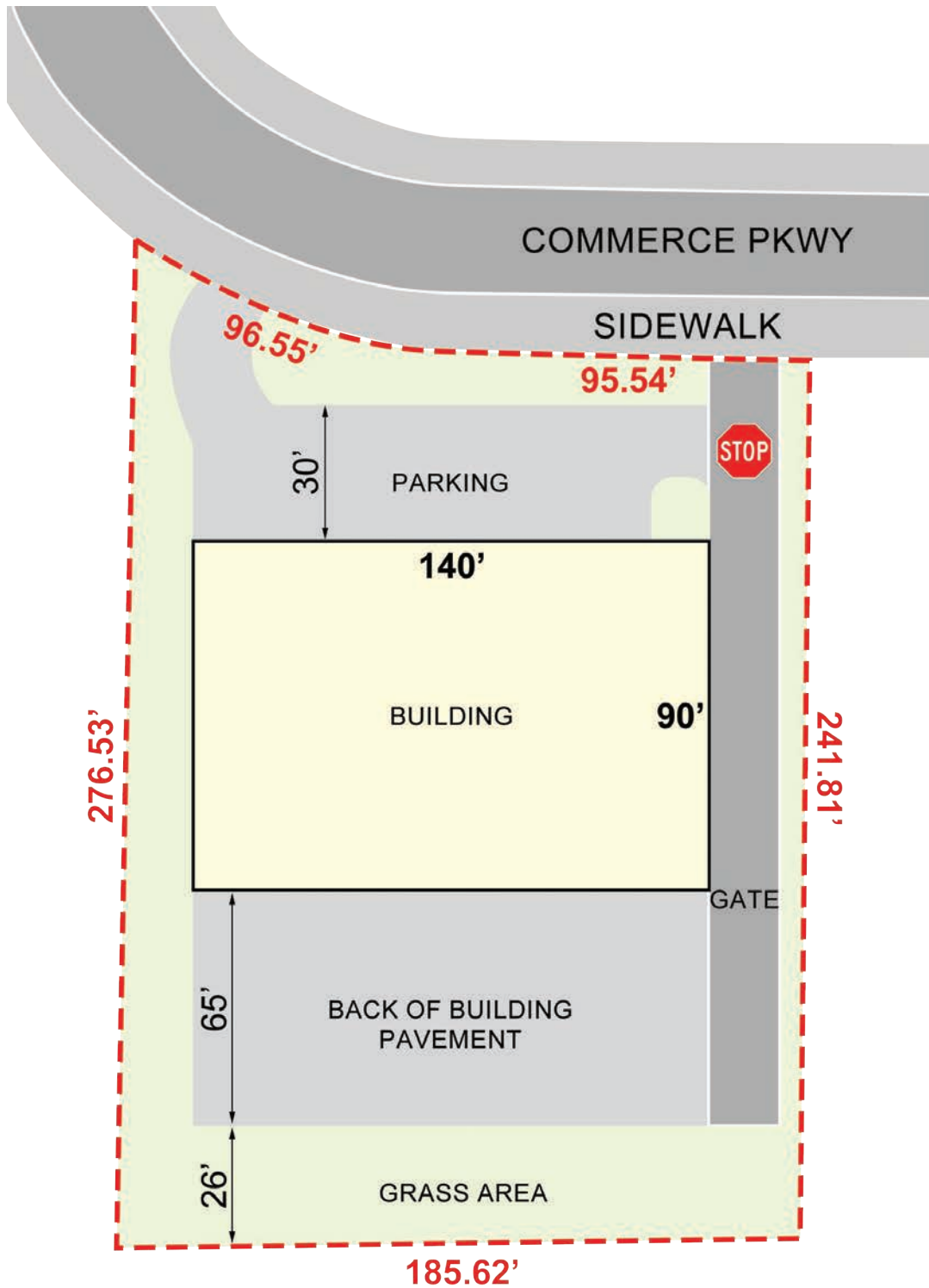
rusty@dresi.com

Demetree Global

941 W. Morse Blvd, Suite 315 | Winter Park, FL 32789

DemetreeGlobal.com

No warranty or representation, express or implied, is made as to the accuracy of the information contained herein, and same is submitted subject errors, omissions, change of price, rental or other conditions, withdrawal without notice, and to any special listing and conditions imposed by our principals.



Contact us now for more information

not to scale

KEVIN HOLLENBECK
Property Manager
407-759-3399
khollenbeck@dresi.com

Demetree Real Estate Services
941 W. Morse Blvd, Suite 315 | Winter Park, FL 32789
DemetreeRealEstate.com

No warranty or representation, express or implied, is made as to the accuracy of the information contained herein, and same is submitted subject errors, omissions, change of price, rental or other conditions, withdrawal without notice, and to any special listing and conditions imposed by our principals.



Contact us now for more information

RUSTY STOECKEL

Broker/Associate

407-422-8191

rusty@dresi.com

Demetree Global

941 W. Morse Blvd, Suite 315 | Winter Park, FL 32789

DemetreeGlobal.com